

Off-line Liquid Effluent Monitor

OFLEM



Key features

- High speed electronics and advanced ratemeter algorithm for high sensitivity and wide measurement range
- Runner mounted top shield section allows easy access to detector and chamber for maintenance and calibration
- Small footprint for ease of installation
- High safety integrity

Overview

Curtiss-Wright's Off-line Liquid Effluent Monitor (OFLEM) continuously measures the concentration of radioactive gamma isotopes in liquid media. It can be used for various applications, from monitoring extremely low radiation levels to the detection of abnormal activity levels during accidents.

OFLEM is a loop system, with a constant stream of sample taken from the process, through the system and returned to the process. It uses a steel mounting frame allowing an easy floor mount installation. For most applications, the frame typically consists of centrifugal pump, lead shielding, detection vessel, amplifier module and I/O termination junction box.

Technical specifications

Low background and high detection efficiency

The heart of the system is the lead shield assembly and detection vessel. Using a 4" thick, 4 pi lead configuration and 2.7 liter chamber with NaI(Tl) sensor, the OFLEM provides the optimum combination of low background and high detection efficiency.

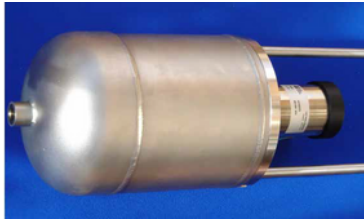
The stainless steel detection vessel is 'Marinelli' style and can be easily removed and disassembled for ease of replacement and decontamination. The chamber is designed to facilitate a swirling upward flow of liquid providing homogeneity of sample and helping to minimise plate-out on the chamber walls. Purge connections are included for chamber cleaning and a base drain connection can be used for removing sediment build up.

Sample flow rate is monitored at all times and visually indicated via a rotameter. Flow can be controlled by a throttling valve and in the event of low flow alarm condition an audio-visual alarm is activated, and, in order to protect the pump, the pump can optionally be shut down during low or no flow conditions.

Access to detector and chamber

OFLEM's frame is complete with isolation valves and disconnection fittings. Optional solenoid operated

valves may be used to control the sampling process for grab sample measurement. To enable easy access to the detector and chamber, a runner mounted shield section is included on the top of the assembly. For calibration, fittings are included on the top of the detection vessel to allow the assembly to be temporarily substituted with a sealed liquid source phantom.

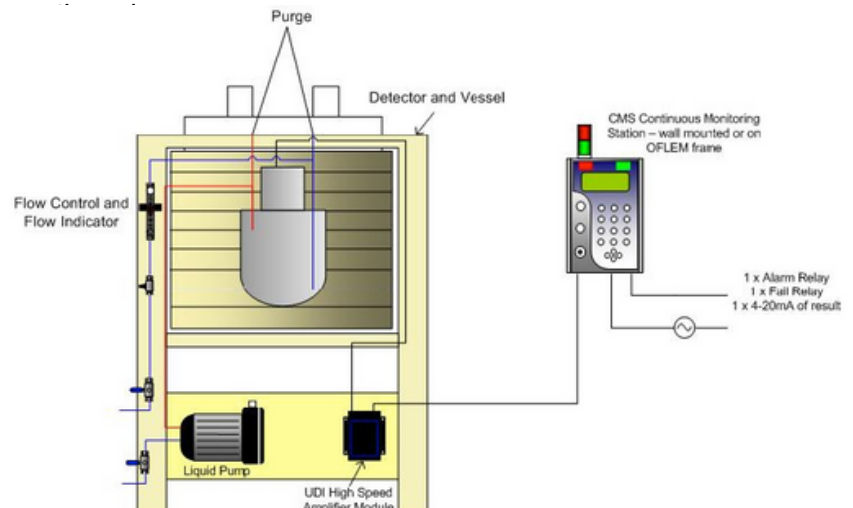


OFLEM chamber and detector

Continuous monitoring station (CMS)

A CMS mounted either on the frame or remote from it provides the display, alarm, control and communication functions for the system. The CMS system can be configured in a gross count mode, or an region of interest can be used for energy specific measurement. Results can be displayed in various units including $\mu\text{Ci/ml}$, Bq/m^3 or gross cps or cpm.

As required, the CMS will generate audible visual alarms in the event of conditions such as high activity, detector fail, and low flow. Onboard relay contacts and analogue devices also allow transmission of result and status to other areas of the plant. For process lines where total discharge data (in Ci or Bq) is required, the CMS can combine measured concentration with process flow rate to give a display of totalized discharge in the last day, week,



Technical specifications

High safety integrity

As an added benefit, the CMS can be provided with additional hardware for high safety integrity.

This hardware, called the SSM (SIL Safety Module) conforms to Safety Integrity Level 2 (SIL2) in accordance with the IEC 61508 standard. The SSM independently monitors the detector output with a simple, separate, scaler circuit. Detector counts are evaluated in this way, and the SSM will activate alarms in the event of a high detector count. No software is used with the SSM and each component on the circuit has been evaluated for potential failure mode and effects analysis.

Although the SSM is resident within the CMS, the board is fully isolated and possesses its own power supply, power backup, and output relays for driving the CMS audio and visual alarms.

By offering users SIL2, the OFLEM gives added protection over conventional systems. The SSM provides a safeguard in the event the main CMS processor fails and reduces the overall risk of 'fail to alarm' scenarios. This is especially important when a failure of the system could indirectly expose people, the process or equipment to radiological or other hazardous conditions.

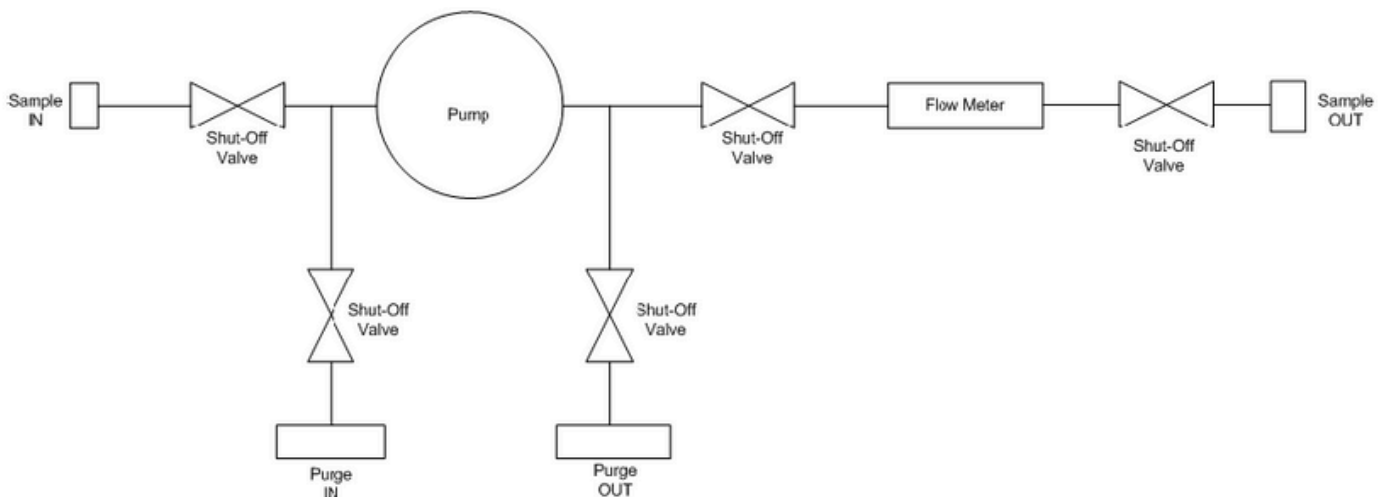


A range of process sampling probes for simple and easy installation in the process line. Further details on the SSM module are available on request.

Optional items

In addition to the SSM circuit, further optional items are available for inclusion with the OFLEM:

- High range operation chamber modification hardware for 1x10⁻⁵ µCi/ml – 1 uCi/ml measurement range
- High temperature process optional heat exchanger for sample cooling prior to measurement
- Grab sample measurement additional hardware and logic to allow the OFLEM to operate as grab sample system (take sample, count, purge chamber, take sample)



Performance specifications

CMS gas activity monitor performance specifications	
Noble gas monitoring station	
Chamber volume	<ul style="list-style-type: none">• 2.7 liters (with optional U-Tube for high range applications)
Shielding	<ul style="list-style-type: none">• 4", 4 pi, with slide top section for easy detector/chamber access
Detector	<ul style="list-style-type: none">• 2x2 NaI (TI), (50 keV – 2.5 MeV)
Sample flow	<ul style="list-style-type: none">• Normally 2 – 20 liters/min
Sensitivity	<ul style="list-style-type: none">• 2.2×10^8 cpm/μCi/ml
Measuring range	<ul style="list-style-type: none">• $<1 \times 10^{-8}$ μCi/ml – 1×10^{-3} μCi/ml
Temperature range	<ul style="list-style-type: none">• 0°C to 50°C (32°F - 122°F)
Max ramp rate	<ul style="list-style-type: none">• 2°C / hr
Pump	<ul style="list-style-type: none">• Centrifugal type
Dimensions	<ul style="list-style-type: none">• 700 mm x 700 mm x 950 mm (28" x 28" x 38")

United States of America

707 Jeffrey Way
Round Rock
Texas 78665-2408
USA

Tel: +1 512-434-2800

United Kingdom

Innovation House
Lancaster Road
Ferndown Industrial Estate
Wimborne
Dorset BH21 7SQ
UK

Tel: +44 (0) 1202 850 450

For more information

Web: cwic.curtisswright.com

Email: sales@nspi.curtisswright.com

About Curtiss-Wright

Curtiss-Wright Round Rock and Wimborne have worked with nuclear and industrial customers for over 60 years. We support customers across the world from facilities located in the US and UK. Our solutions are embedded in strategic national infrastructure and our people are active partners in customer programs that are focused on delivering advanced future nuclear and industrial capabilities.

Curtiss-Wright Corporation (NYSE: CW) is a global integrated business that provides highly engineered products, solutions and services mainly to Aerospace & Defense markets, as well as critical technologies in demanding commercial power, process and industrial markets. We leverage a workforce of approximately 8,600 highly skilled employees who develop, design and build what we believe are the best engineered solutions to the markets we serve. Building on the heritage of Glenn Curtiss and the Wright brothers, Curtiss-Wright has a long tradition of providing innovative solutions through trusted customer relationships.