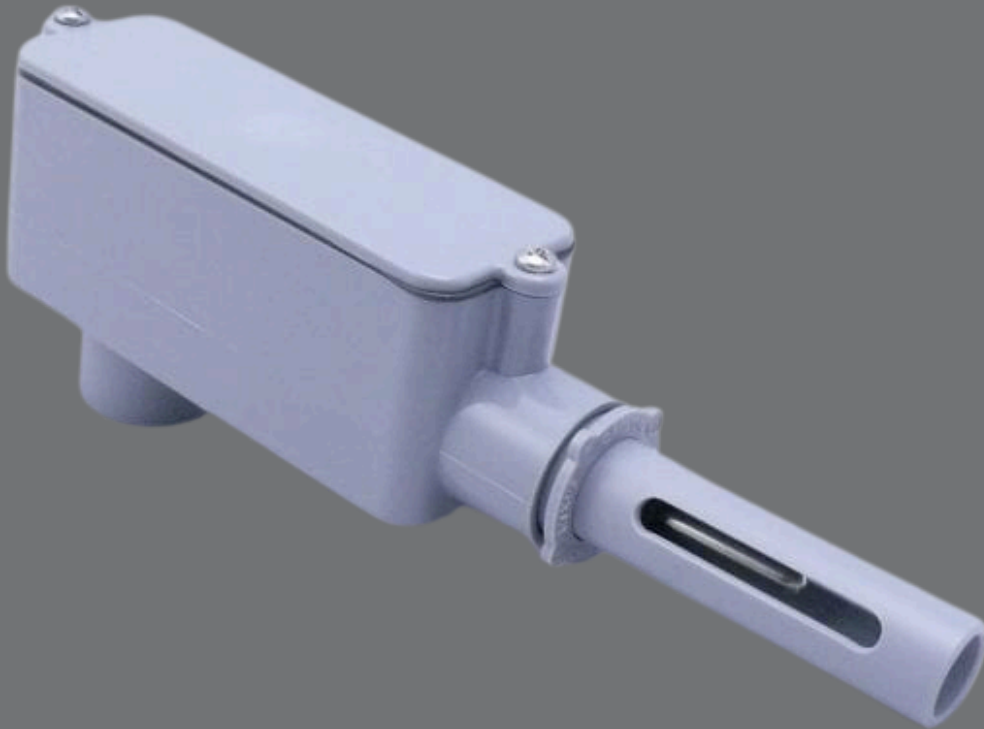


Model 743 outside air temperature sensor

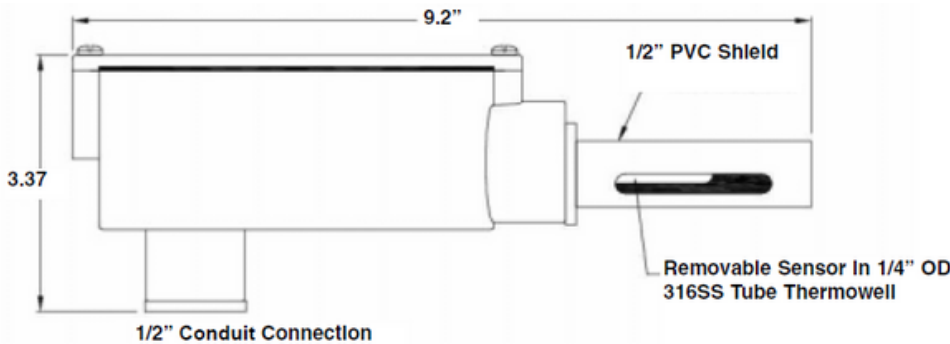


Overview

Unique design to provide accurate temperature indication of outside air. The shield's two slots allow efficient air flow across the temperature sensor. The integrated sun shield is designed to prevent ice buildup and eliminate incorrect readings caused by exposure to direct sunlight. PVC weather resistant housing and sun shield provide excellent UV aging and corrosion resistance and are U/L listed. This model is available with water resistant housing and the sensor is easily removed for maintenance. Ideal for remote sensing when used in conjunction with optional temperature transmitter.

Technical specification

Feature	Description
Element type	Standard platinum, 100 ohms @ 0C (32F), .00385, TCR, with optional Pt1000 and 10K thermistor
Accuracy	Standard DIN-B
Termination housing	Standard PVC weather resistant box, with a NEMA4 steel box available as an option.
Maximum operating temperature	90°C (194°F)
Sensor lead wire	Three 24 AWG Teflon insulated
Insulation resistance	Greater than 100 Megohms @ 100VDC @ 21C (70F)
Accessory	4500H transmitter (0502-157-0003)



Element Type:	Code	PB	Platinum RTD, 100 ohms @ 0°C (32°F), 0.00385055 TCR (DIN B)
		PC	Platinum RTD, 1000 ohms @ 0°C (32°F), 0.00385055 TCR (DIN B)
		TM	Thermistor, 10,000 ohms @ 25°C (77°F)
Max. Operating Temperature:	90°C (194°F)		
Sensor Lead Wire:	RTD	Three 24 AWG Teflon insulated	
	Thermistor	Two 20 AWG polyolefin insulated	
Insulation Resistance:	Minimum 100 megohms @ 100 VDC @ 21°C (70°F)		
Stability:	RTD	Typically, 0.26°C (0.47°F) over 5 years	
	Thermistor	Typically, 1°C (1.8°F) over 5 years	
Accuracy:	RTD	± 0.3°C @ 0°C (± 0.56 °F @ 32°F)	
	Thermistor	± 0.2°C, from 0°C to 87°C (± 0.36 °F, from 32°F to 158°F)	
	With Transmitter	Add 0.08% of span (RTD only)	

Technical specification

Code	Outside Air Sensor
743-PB	RTD, 100 ohms @ 0°C (32°F) (DIN B)
743-PC	RTD, 1000 ohms @ 0°C (32°F) (DIN B)
743-TM	Thermistor, 10,000 ohms @ 25°C (77°F) - not available with transmitter Add code "MT" for matched calibrated to transmitter. See RTD General Specifications.

Code	Housing
-	PVC weather resistant box - Industry Standard
W	Painted steel box with cover, NEMA 4

For RTD assemblies with Sensor-Mate® Temperature Transmitter

Model	Sensor-Mate® Transmitter
4600H	100 ohm Pt RTD input/ PC programmable/ 4-20mA output
7700H	1000 ohm PT RTD input/ 4-20mA output

Code	Temperature Range
(__ to __)	Specify °C or °F

743-PB - / 4600H - (0° to 100°F) ← Sample Model Number (Sensor with Transmitter)

743-PB - ← Sample Model Number (Sensor without Transmitter)

- - / - ← Your Model Number

United States of America

707 Jeffrey Way
Round Rock
Texas 78665-2408
USA

Tel: +1 512-434-2800

United Kingdom

Innovation House
Lancaster Road
Ferndown Industrial Estate
Wimborne
Dorset BH21 7SQ
UK

Tel: +44 (0) 1202 850 450

For more information

Web: cwic.curtisswright.com

Email: sales@nspi.curtisswright.com

About Curtiss-Wright

Curtiss-Wright Round Rock and Wimborne have worked with nuclear and industrial customers for over 60 years. We support customers across the world from facilities located in the US and UK. Our solutions are embedded in strategic national infrastructure and our people are active partners in customer programs that are focused on delivering advanced future nuclear and industrial capabilities.

Curtiss-Wright Corporation (NYSE: CW) is a global integrated business that provides highly engineered products, solutions and services mainly to Aerospace & Defense markets, as well as critical technologies in demanding commercial power, process and industrial markets. We leverage a workforce of approximately 8,600 highly skilled employees who develop, design and build what we believe are the best engineered solutions to the markets we serve. Building on the heritage of Glenn Curtiss and the Wright brothers, Curtiss-Wright has a long tradition of providing innovative solutions through trusted customer relationships.