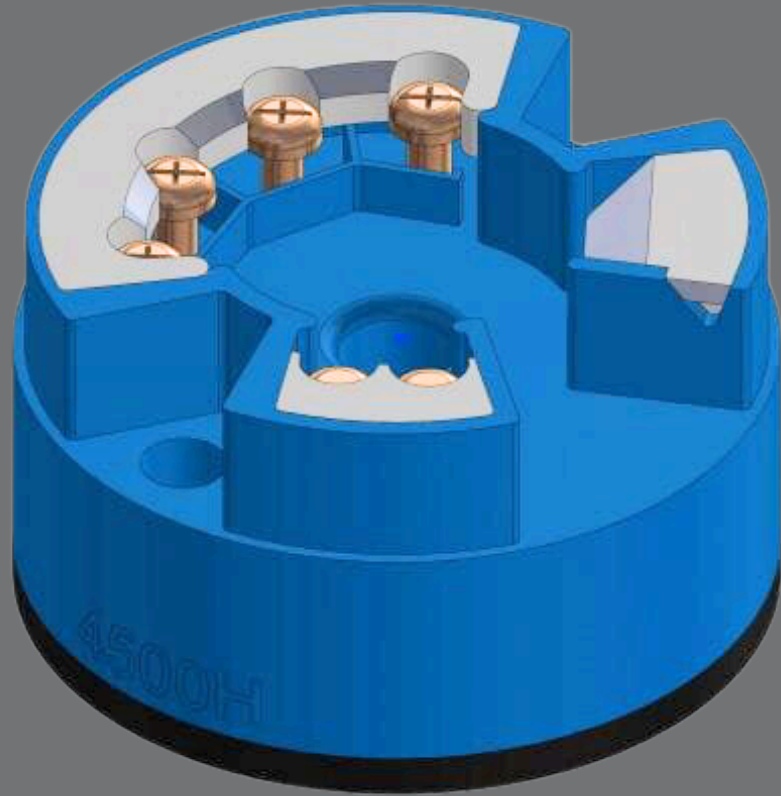


7600H temperature transmitter



Key features

- Low cost
- 0.08% accuracy
- Full input-output isolation
- Custom input/linearization capability
- Configurable via a PC or HART Communicator
- T/C Inputs: B, C, D, R, S, E, J, K, L, N, T, U
- RTD inputs: Pt100, Pt500, Pt1000, Ni100, Ni500, Ni1000
- mV Inputs: -10 to 75mV
- Ohm Inputs: 10 to 2000 ohms
- Outputs: 2-wire, 4-20mA or 20-4mA with optional HART signal superimposed
- Full instruction manual available on request

Overview

Microprocessor-based, this a highly accurate temperature transmitter that accepts a wide range of inputs, is loop powered and provides 4-20mA output signals. Configured through a PC and software, the 7600H is a DIN Form B design for mounting in a sensor connection head. An optional digital display/meter provides local indication of the process temperature in °F or °C, 0-100% of scale or the 4-20mA output. The transmitter and display are mounted in a windowed, explosion-proof instrument enclosure and can be installed in virtually any enclosure or on a wall.

Technical specification

Feature	Description
Input range	Standard Pt100, selectable range -328 to 1202F (-200 to +650C), minimum span 18F (10C), with optional various RTD and TC inputs
Output	Standard 4-20mA, with optional 20 to 4mA
Zero and span adjustments	Using software provided, it can be set anywhere within sensor range. Zero and Span are non interacting.
Failsafe	Standard upscale, with optional downscale
Response time	1 second
Damping	User settable from 0 to 8 seconds
Isolation	3750 VAC, input to output
Power supply	8 to 35VDC
Load resistance	$R_{Max} \text{ (ohms)} = (V_{Supply} - 8VDC) / .025A$
Accuracy	Standard Pt100: .36F (0.2C) or 0.08% of span, whichever is greater
Long term stability	+/-0.05% of calibrated span per year
Cold junction compensation	+/-1C (measured with Pt100 IEC 751, Class B)
Temperature limit	-40F to 185F (-40C to 85C)
EMI/RFI effect	Conforms to EU Directives (CE Mark) and Meet IEC 61326 amend 1, 1998 and NAMUR NE21.

Technical specification

Feature	Description
Approvals	Optional Factory Mutual (FM), Canadian Standards Association (CSA) and Intrinsically Safe (IS)
Accessories	Programming software (0453-001-4001) and USB interface programming cable (0453-001-4005)

United States of America

707 Jeffrey Way
Round Rock
Texas 78665-2408
USA

Tel: +1 512-434-2800

United Kingdom

Innovation House
Lancaster Road
Ferndown Industrial Estate
Wimborne
Dorset BH21 7SQ
UK

Tel: +44 (0) 1202 850 450

For more information

Web: cwic.curtisswright.com

Email: sales@nspi.curtisswright.com

About Curtiss-Wright

Curtiss-Wright Round Rock and Wimborne have worked with nuclear and industrial customers for over 60 years. We support customers across the world from facilities located in the US and UK. Our solutions are embedded in strategic national infrastructure and our people are active partners in customer programs that are focused on delivering advanced future nuclear and industrial capabilities.

Curtiss-Wright Corporation (NYSE: CW) is a global integrated business that provides highly engineered products, solutions and services mainly to Aerospace & Defense markets, as well as critical technologies in demanding commercial power, process and industrial markets. We leverage a workforce of approximately 8,600 highly skilled employees who develop, design and build what we believe are the best engineered solutions to the markets we serve. Building on the heritage of Glenn Curtiss and the Wright brothers, Curtiss-Wright has a long tradition of providing innovative solutions through trusted customer relationships.